

Hello,

Thank you for coordinating the Minitab Annual Enterprise License at your academic organisation.

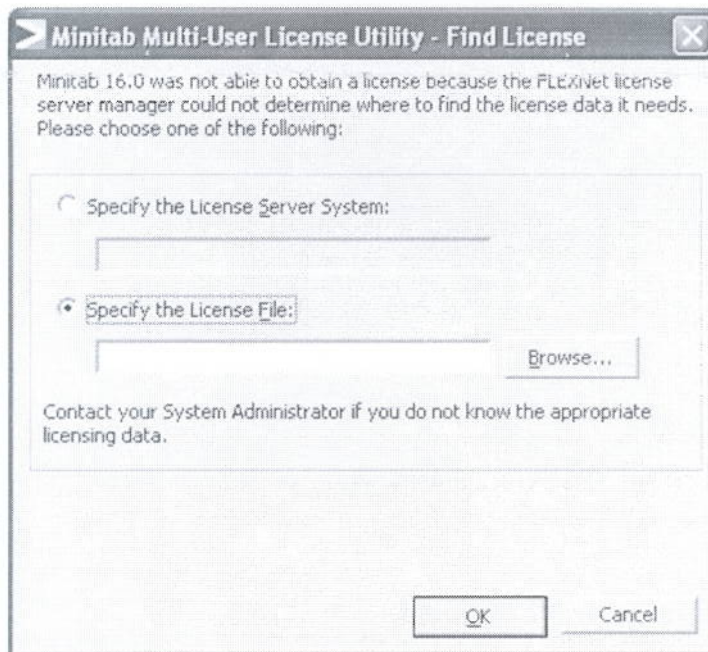
I have enclosed the Individual Install CD of Minitab Release 16 for Windows. You may use this CD to make copies of the software for distribution to students, faculty and staff. You may also use them for on-campus installations instead of the FlexLM version, if you like. The CD is hard coded to expire at the same time as your Minitab 16 entitlement.

Your Minitab entitlement will be sent to you via email – please look for it.

Again, thank you for all your help. If you have any questions, please do not hesitate to contact us.

Please share the below instructions with the recipients of the installation CD. In the event that Minitab 16 does not automatically launch as expected, these instructions explain how to specify the license file needed to run the software.

1. Run the Minitab software installation.
2. Launch the software.
3. If prompted to specify the License Manager or choose a file, choose **Specify the License File**.



4. Browse to the license file **minitab.lic**, which is located in the C:\Program Files\Minitab\Minitab 16 folder on your machine by default. (If you have a 64-bit version of Windows, the minitab.lic file is in C:\Program Files (x86)\Minitab\Minitab16.)
5. Click **Open**.
6. Click **OK** to launch the software.

Best regards,

Minitab Academic Sales

Encl: (1) IND File CD