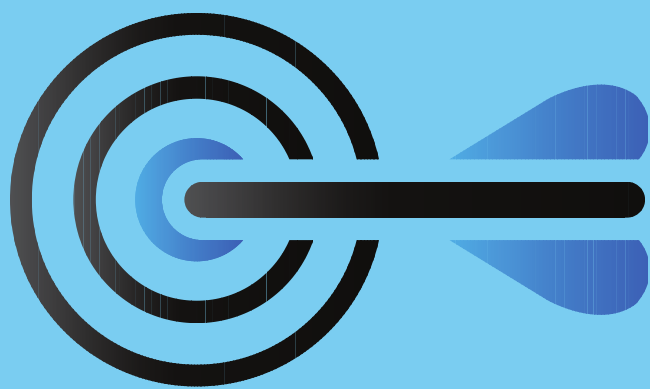


# The Gateway to Success Project

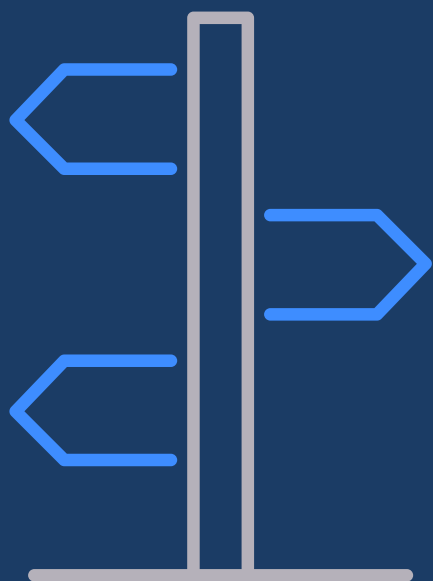
A virtual hub to support all learners

## AIM

To develop more flexible and accessible ways for students to use support services by creating a virtual 'hub' which brings together all services into one online space.



## PURPOSE

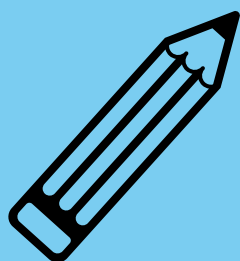


1. To offer students complementary paths to accessing services.
2. To provide greater flexibility and additional opportunities for students to engage with services in a way that best meets their needs.
3. To promote awareness of support services among both the student and staff bodies.

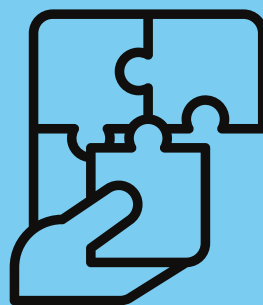
## PROJECT STAGES



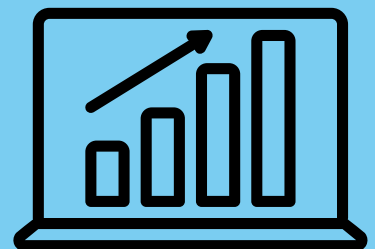
Identify current views about support services through a Needs Analysis



Design a virtual Hub using a student-centred viewpoint



Develop a longer term strategy to sustain the Hub



Use data analytics to measure the success of the Hub

## GUIDING PRINCIPLES



RELATIONSHIPS



ENGAGEMENT



ACCESSIBILITY



The Gateway to Success Project is funded by the Higher Education Authority