

The Gateway to Success Project

A virtual hub to support all learners

STAGE 1: VISION



Determine 'vision' of each support service by considering ...

- The aim of the Hub is to...
- The Hub will change working practices by ...
- I want students to be able to find ...
- I want students to be able to do...

This stage is now COMPLETE

STAGE 2: HUB RESOURCES

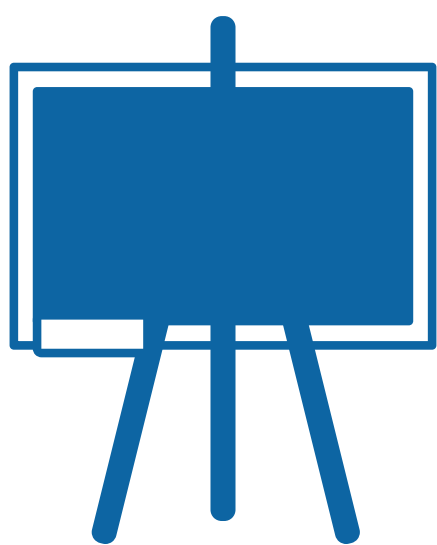
Audit existing resources to identify

- Resources that can be added to the Hub in current form
- Resources that require editing or modification which can then be added to the Hub
- Resources that require development



This stage is ONGOING

STAGE 3: TRAINING



- Identify training needs of support services staff to
- update content
- ensure content is accessible
- maintain the Hub

This stage is ONGOING

STAGE 4: EVALUATION

- Use in-built reporting tools on student interactions and resource usage to evaluate the success of the Hub.

